

# Rail Relay

# SA Rail Relay



## USES

The product has one-way and two-way contact structure, which is usually used in automatic control system, mobile communication equipment, connecting PLC or single-chip computer for current amplification drive.

<u>SA</u>	<u>1</u>	<u>-8</u>	<u>10</u>	<u>DD</u>	<u>CA</u>
1	2	3	4	5	6

- 1 Product type: Rail type relay
- 2 Circuit structure: 1 One road 2 Second road
- 3 Control output voltage 3: 5-36V 8: 5-80V 22: 24-220V
- 4 Load maximum current 10: 10A 20: 20A
- 5 Control mode and voltage description: DD DC controlled DC, DA DC controlled AC, AA DC controlled AA
- 6 Common mode of input: CA common-anode, CC common-cathode

## USE OF THE ENVIRONMENT

Input/output outlet M2.5	0.4 appropriate
Stripping length	6-7mm
Ambient temperature	-30~+60℃
Relative humidity	+20℃ 98%
Vibration freq. at the fixed	3G, 1~50Hz amplitude 0.5mm
Concussion	(60~100) time/minute、
Altitude	2000m
Installation direction	Random
International Protection	IP20

## ORDER INSTRUCTION

Small package QTY.	6PCS
Package QTY.	180PCS
Mounting bracket type	35mm Guide rail, screw

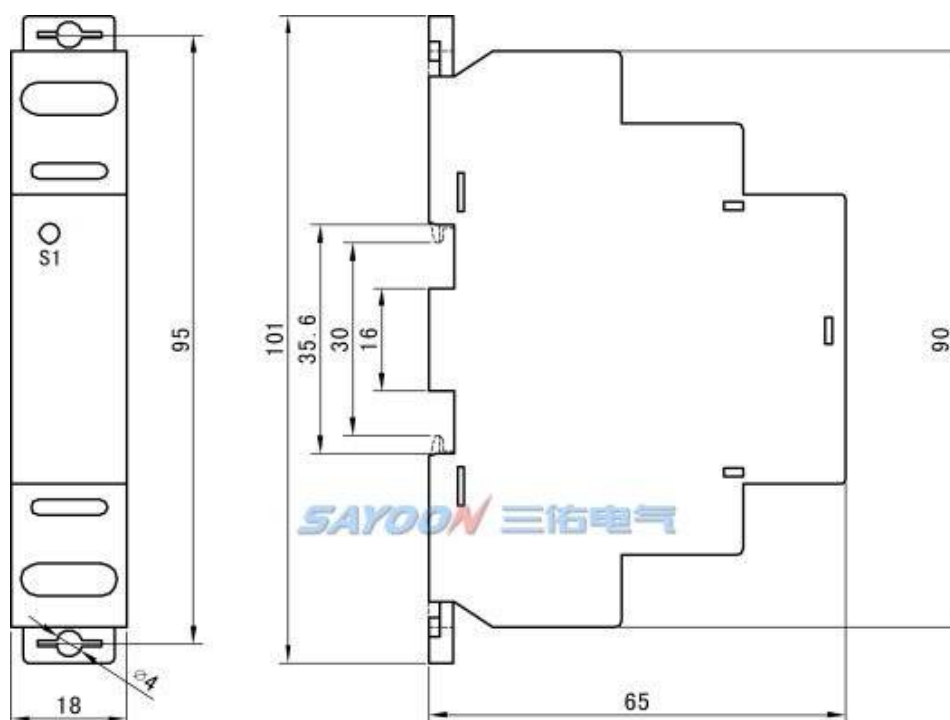
## TECHNICAL PARAMETERS

(Version 1.37)

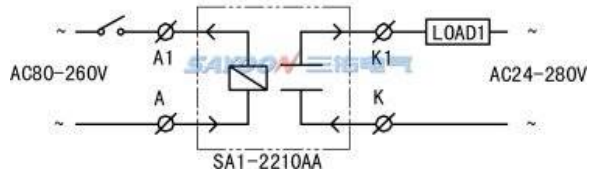
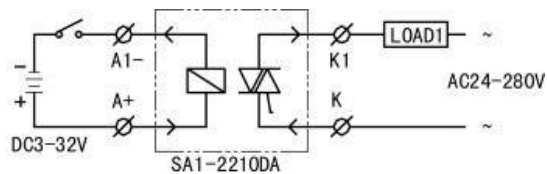
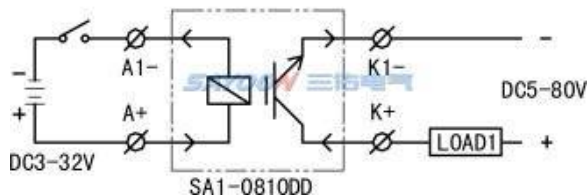
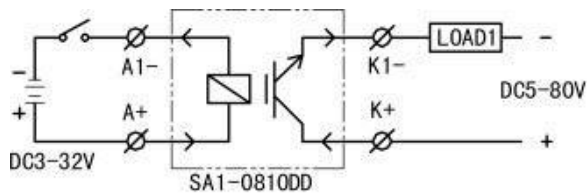
SAYOON Product Type	SA
Type	SA1-810DD   SA1-2210DA   SA1-2210AA
Control mode	DC Controlled DC  DC Controlled AC AC Controlled AC
Input control voltage	3-32V   3-32V   80-260V
Input Control Current	< 10mA Built-in constant current circuit
Input on-off voltage	0N>2.6V OFF<2V  0N>2.6V OFF<2V  ON OFF 80V
Output rated voltage	5-80V DC   24-280V AC   24-280V AC
Output rated current	4A
Output maximum load current	10A
Output Design Current of Internal Parts	30A   18A   18A
Output Driving Mode	Electromagnetic zero-cross diaphragm zero-cross diaphragm
Output on-state pressure drop	≤1.2 DC   ≤1.2 DC   ≤1.2 AC
Output fault leakage	≤1mA
Output isolation voltage	≥2500V AC
Output Absorption Voltage	Voltage Sensitive  RC Absorption   RC Absorption
Output on-off time	2ms   2ms   10ms
Action status indication	LED red

Note: The size of the output voltage and current can be selected. Due to the different user environment, the required performance is different. In order to better improve the overall performance of the product, Sanyou may adjust the relay parameters accordingly. The above parameters are for reference only. For details, please refer to the Sanyou DC Contactor Selection Guide and the Reliability

## INSTALLATION DIAGRAM



## WIRING DIAGRAM



## FEATURES

It is small in size, high in life, good in reliability, high in sensitivity, low in power consumption, small in electromagnetic interference and overall in the way of guide rail installation. The wiring adopts plug-in mode, which is fast and convenient to install.